
Contents

1	Introductions of fingerprint door lock.....	3
1.1	Features.....	3
1.1.1	Introduction.....	3
1.1.2	Functions.....	3
1.2	Dimensions	4
1.3	Technical data	4
2	Operations.....	6
2.1	Ways to put the finger	6
2.2	Operation	6
2.3	Indication Sounds	8
2.4	Installing & replacing batteries	8
2.4.1	Installing batteries.....	8
2.4.2	Replacing batteries.....	8
3	Installation Procedures.....	9
3.1	Opening pores on the door.....	9
3.2	Installation procedures	10
4	Maintenance and upkeep	11
4.1	Daily maintenance and upkeep	11
4.2	Notice for use.....	12
5	After-sale service	14
5.1	Free installation policy.....	14
5.2	Free Maintenance and upkeep	14
5.3	Product return policy	15
5.4	Service guiding	15
6	Warranty card.....	16

A/1(2016.3)

Important tips

- 1 Fingerprint lock is a kind of hi-technical product, and its normal operation and life span are directly influenced by the installation. Therefore, we kindly suggest you to call in a professional to install it. Please open pores, supporting pits, buckle and buckle pores according to the indication of opening pore in the door plank. Pores should be opened accurately and the lock should be installed according to the indication strictly. If the lock cannot be opened (smoothly) after installation, please contact with the local distributors or our after-sales department to solve the problem.
- 2 If your house is sprucing up, it is suggested to uninstall the lock after you exanimate the locks and to reinstall them after the sprucing up. The reasons are: 1. To avoid the lock appearance being damaged by corrosives, and the wet paint on the door will influence the gearing of the lock. 2. Ethyl alcohol, paint and other chemicals will be used when we sprucing up the house, which will be volatized to accelerate to damage the lock surface and shorten its life span.
- 3 Before installation, please switch on all of the connecting wire and load the batteries, and then press the initialized button to initialize the lock and restore factory defaults.
- 4 When installing the lock, please do take the mechanical keys with you so as to unlock it if the door is close before you finish the installation.

1 Introductions of fingerprint door lock

1.1 Features



Front lock case(fingerprint)

front lock case(without fingerprint)

back lock case

1.1.1 Introduction

Features: delicate appearance, reasonable structure, secure fingerprint lock.

Applications: wooden door inside

1.1.2 Functions

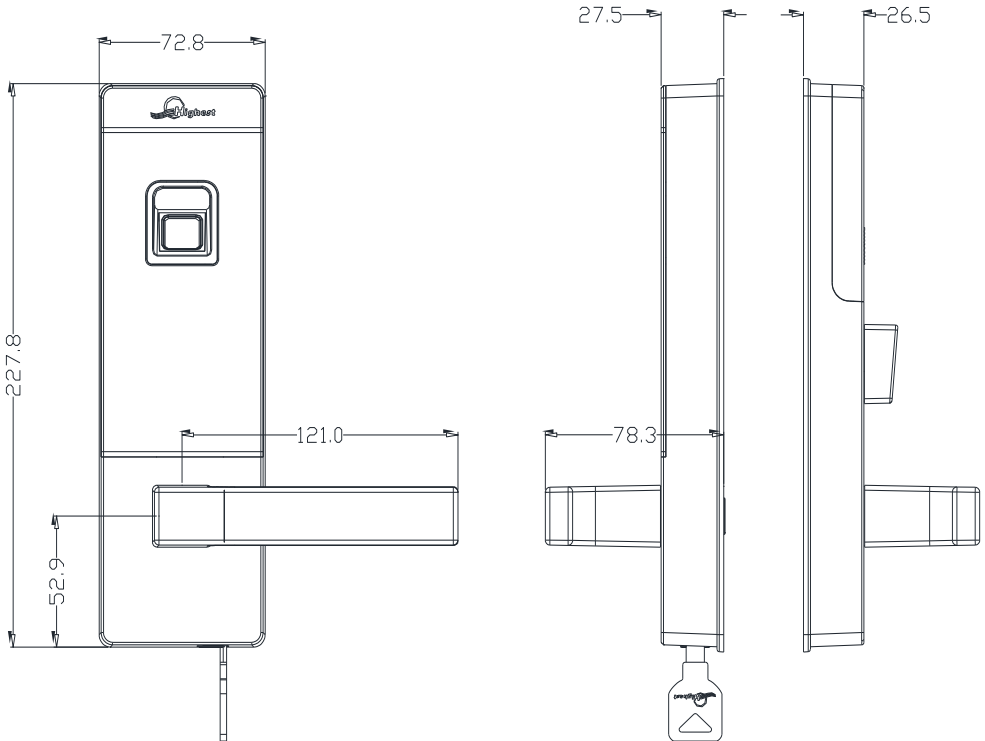
We adopt the international advanced biotechnology to ensure its high quality; 4 pieces of AA batteries; handles can prevent the wreaking havoc.

unlocking patterns: 1.fingerprint unlocking. 2.card unlocking. 3.key unlocking

The card-unlocking function can be designed for hotel system management, which is suitable for rental housing, hotel, etc. Both time management and fingerprint unloking could be achieved at the same time.

The unlocking cards are T5557 coded cards with high security and reliability.

1.2 Dimensions



1.3 Technical data

NO.	items	Technical data
1	Sensor resolution	Bright background, 500dpi
2	Sensor damage resistance ability	1000 times impact with 4H pencil
3	Starting time	<1 second
4	Ways of contrast	1: N
5	False rejection rate(PRR)	≤1%

6	False acceptance rate(FAT)	≤0.0001%
7	Finger point	360 °
8	Fingerprint register module	Create one fingerprint module at one time
9	Fingerprint update mode	Auto update
10	Fingerprint information	The fingerprint information will not lose when the batteries is off of changed
11	Fingerprint capacity	100 pieces
12	Light interference	Avoid explosion under high light
13	Fingerprint collector	Hard glass, nanometer surface treatment
14	Static power consumption	< 30 micro amp
15	dynamic power consumption	The working current is under 200 mA
16	Control system	Dicaryon dual circuit single control
17	The fingerprint battery life	Open door for 5000 times
18	The combination battery life	Open door for 6000 times
19	Working voltage	DC 6V
20	Power supply mode	Battery powered
21	Low voltage alarm	4.8V
22	Antistatic ability	Contact discharge 8KV, air discharge15KV
23	Working temperature	-10°C to 55°C
24	Working humidity	10%-90%
25	Storage temperature	-20°C to 7 0°C
26	Open door method	Left open, right open

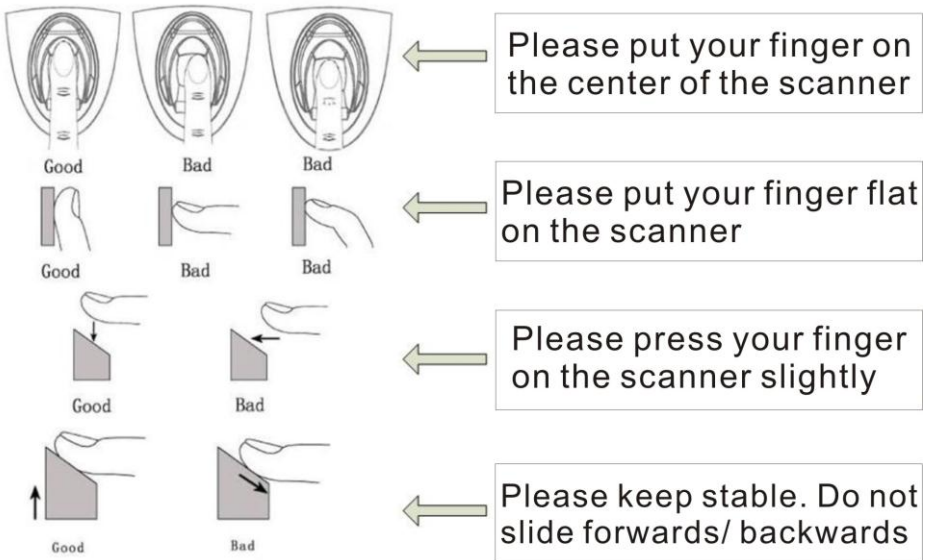
(Remarks: Our company emphasize the technology update, we reserve the right to change parameters with prior notice.)

2 Operations

2.1 Ways to put the finger

Remarks: please put your finger in right position

Please put your finger in fingerprint acquisition window (fingerprint scanner) with moderate force and keep your finger flat, for the fingerprint contains most of the image information. We contrast the right and wrong ways to put your finger in following pictures.



2.2 Operation

- **Ways to unlock the door**

1. **Fingerprint:** put your finger on the fingerprint scanner. When you hear the music, the door will be unlocked. The fingerprint capacity is 100 pieces.

-
2. **Card:** keep the unlocking card close to the card reader, when you hear the music, the door will unlock. The card capacity is 100 pieces.
 3. **Mechanical key:** rotate the key clockwise to a right position, keep it stationary, and then press the handle to unlock the door.
- **Operation instructions:**
 1. **Initialization:** continuously press the switch of circuit board for 5 times, you will hear 2 long sounds of Beep with blue light twinkling.
 2. **Setting master card:** when the blue light twinkling(7-10s) after initialization, swipe the card on card reader. The master card is successfully set after you hear a short sound of beep followed by a long sound.
 3. **Setting master fingerprint:** swipe the master card, there would be a short sound of beep followed by a long sound and the motor rotates. Please put your finger to the fingerprint scanner until you hear a short sound of beep followed by a long sound; Or when the blue light twinkling(7-10s) after the initialization, put your finger to the fingerprint Scanner until you hear a short sound of beep followed by a long sound.
 4. **Adding the unlocking cards:** swipe the master card(or read the master fingerprint), there would be a short sound of beep followed by a long sound and the motor rotates. Please put the card wanted to the card reader, a long sound of beep means the card is added successfully, and you can continue to add cards.
 5. **Adding unlocking fingerprints:** swipe the master card(or read the master fingerprint), there would be a short sound of beep followed by a long sound and the motor rotates. Please put the finger wanted on the fingerprint scanner, a short sound of beep followed by a long sound means the fingerprint is added successfully, and you can continue to add unlocking fingerprints.
 6. **Deleting unlocking cards and fingerprints:** Swipe the master cards for 5 times continuously, then all of the unlocking cards and fingerprints would be deleted (including the master fingerprint), and the master card would be still valid. Or initialize the lock to clear all of the cards and fingerprints(including both the master card and the master fingerprint)

2.3 Indication Sounds

Music -- means the unlocking card or fingerprint is OK and the door would be unlocked.

3 Prompt sounds of Beep -- means low voltage alarming, and you should change the batteries.

5 continuous sounds of Beep -- means the card is invalid and fails to unlock the door.

4 sounds of Beep following one sound of beep -- means the fingerprint is invalid and fails to unlock the door.

6 sounds of Beep following one sound of beep -- means the fingerprint is not read.

2.4 Installing & replacing batteries

2.4.1 Installing batteries

Unscrew the battery cover, slide it upwards, take it away, and put in 4 pieces AA batteries of 1.5V voltage. Then put the cover back and screw it.

2.4.2 Replacing batteries

When the batteries is in low power, you will hear 3 Prompt sounds of Beep every time you unlock the door.

- A. Using the battery of wrong model will cause explosions.
- B. Please use Carbon zinc / Alkaline manganese dioxide battery of brands only.
- C. Please follow the local environmental laws to handle the waste batteries.
- D. If handled improperly, the waste batteries may cause explosions. Please do not charged or decompose the waste batteries or put them into fire.
- E. Please do follow the manual to use batteries.
- F. Please install the batteries by correct positive and negative pole following the instruction directions.
- G. Please put the batteries in the places that children and pets cannot reach.
- H. If the lock is not used for a long time, please take off the batteries.

- I. Do not use the new batteries with the old ones together.
- J. If your skin or clothes touch the liquor of the batteries, please flush with water immediately. If your eyes touch it, immediate water flushing is necessary and then go to a doctor.

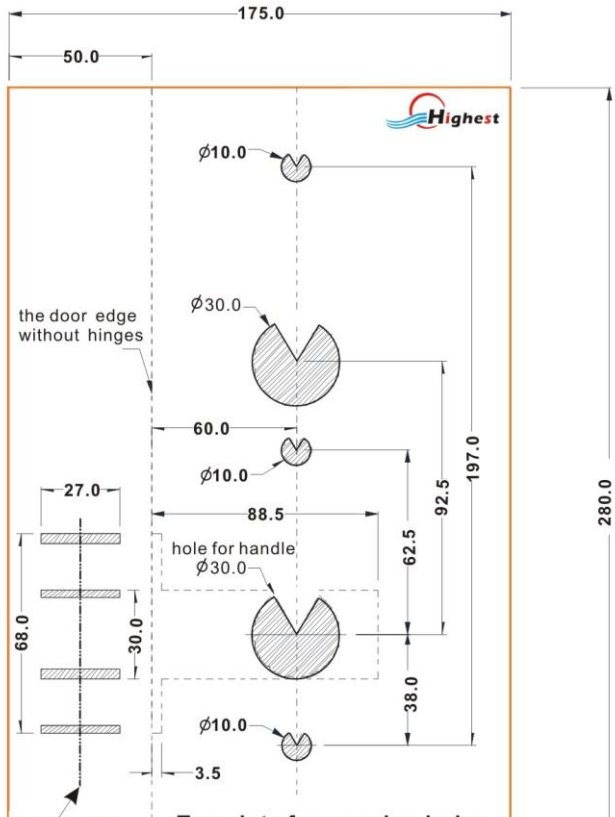
3 Installation Procedures

3.1 Opening pores on the door

This lock can be installed in wooden doors. The config specs of the lock body and screw are different for different customer demands.

The single-bolt of lock body(50MM or 60MM) and common hotel lock mortise are suitable for this lock.(Instruction on this page si for 60mm single –bolt lock body in wooden door).

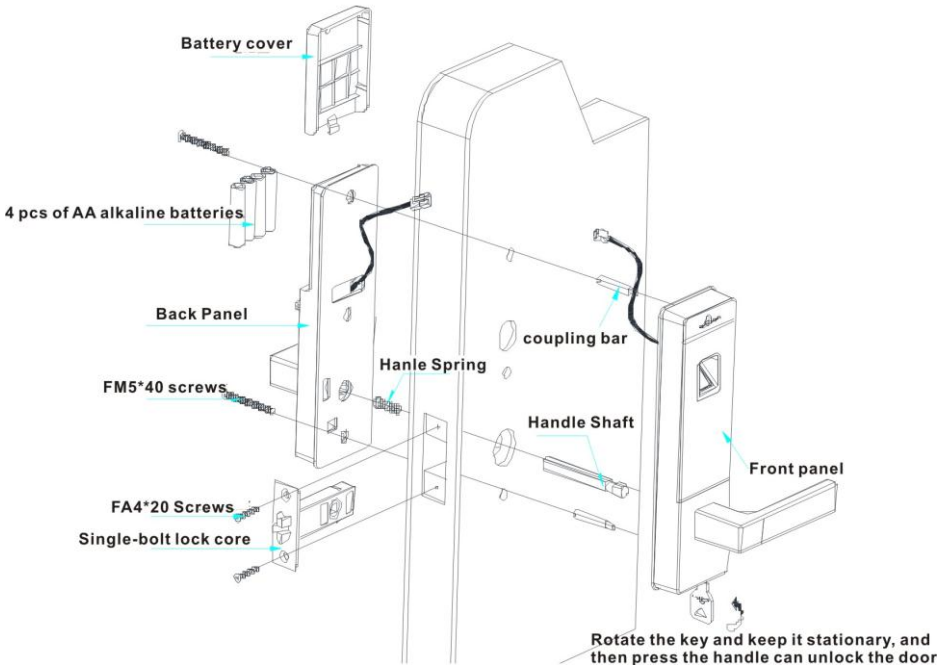
Picture 1



3.2 Installation procedures

Before installation, please put through all of the connecting wire and install the batteries, press the initialization button for 5 times on the circuit board to initialize the lock firstly. After that, you must set one management card and management fingerprint to do the following operation.

After opening the pores on the door as the picture 1, put the lock body on the position in the door and then use 2 pieces of FA4*20 countersunk head self tapping screw to fix the lock body. Check if back handle spring is fixed, then put handle square shaft into the lock body. Following the picture below, connect the 2P wires on front body with that on the back body, fixing them with 2 pieces of FM5*40 machine screw. And Finally put in batteries and fix the cover.



Picture 3

4 Maintenance and upkeep

4.1 Daily maintenance and upkeep

1. keep the lock away from corrosives which can damage the protection layer and the luster on the lock.
2.The handle is the key part to open and close the door, and its flexibility will directly affect the use of the lock. Therefore, do not hang objects on the handle.
3. If the door is out of shape, there would be more friction force and even make the spring bolts cannot stretch when they get into the door case. In such a case, the place of buckle should be adjust.
4. After using the fingerprint scanner for a long time, there may have dirt that affect its normal use. Please wipe the dirt with soft cloth.
5. When the low voltage alarm rings out, please replace the batteries to make sure the lock work well.
6. When replacing the batteries, please notice the positive and negative poles.
7. Please make sure the mechanical keys are in safekeeping.
8. Do not scratch the fingerprint scanner with hard or sharp objects.
9. Do not use your fingernail to scratch the fingerprint reader.
10. Please use soft cloth to wipe the fingerprint scanner surface when it is wet.
11. When acquiring the fingerprint, please put your fingerprint on the scanner flatly.
12. If the lock cannot rotate smoothly or in the wrong place, please ask a

professional to add some machinery oil.

13. Please keep the rotating parts oiled to make sure their smooth drive and longer life span. Examine once half year or one year is suggested.

14. When using the lock, please put some graphite powder or pencil core powder into the lock core groove regularly or when the mechanical key cannot infix or pull out smoothly. Please do not add any lubricant oil because that may paste on the mechanical spring and hinder the lock running.

4.2 Notice for use

4.2.1 When put the finger on the fingerprint scanner and hear short sound two times, but fail to open the door:

A. This fingerprint is invalid. Elimination: use a valid fingerprint or open the door by password or mechanical key.

B. This fingerprint has been deleted. Elimination: use a valid fingerprint or open the door by password or mechanical key.

C. fingerprinted in the wrong way. Elimination: put the finger on the fingerprint scanner again. Please press the finger against the scanner and on the central.

D. the finger is desquamated or hurt so that the fingerprint is damaged. Elimination: 2 fingerprints of one person should be registered.

E. The finger is wet, dirty or with sweat or colored some skin care product. Elimination: clean the finger with tissue and then put it on the scanner to unlock the door.

F. Put the finger on the scanner too lightly to scan most of the fingerprint. Elimination: Put the finger on the scanner correctly to unlock the door.

G. The direct sunlight influences the fingerprint imaging. Elimination: use any light-proof objects to shut out the light.

H. The hand is too cold. Elimination: warm up the hand and try again.

I. The hand is too dry. Elimination: moisture the hand and try again.

4.2.2 The fingerprint is recognized and the green light on, but the door is not unlocked.

A. Installation error. Elimination: install the lock correctly.

B. Hear the sound of elevator rotating, but the door is not unlocked.

Elimination: 1. The handle is not back to the origin. 2. Square shaft of the handle is too short. 3. The spring of the handle in the back cover falls off.

4.2.3 The mechanical key can not open the door.

A. Using the wrong key. Elimination: use the right key to unlock.

B. The mechanical lock part is damaged. Elimination: unlock the door by other methods and then replace the mechanical lock part.

C. The cylinder is damaged. Elimination: unlock the door by other methods and then replace the damaged parts in the cylinder.

D. The clutch parts is out of work. Elimination: unlock the door by other methods and then replace the damaged parts of clutch.

4.2.4 The main spring bolt can not retract completely when the front handle turning. Reasons include:

A. The lock cylinder can not gear flexibly.

B. There is too much dirt on the oiled part of the cylinder.

C. The cylinder is installed on the door but the supporting anti-thief pole is not install correctly.

D. The connecting wires are not put in order when installing the back lock body, so that the cylinder is stuck.

4.2.5 The lock in the state of keep- open or keep- locked. Reasons include:

A. The clutching parts are out of work. (Too much oil on the clutch and flows into the elevator so that the elevator can not run well.)

B. 1. Length of the handle square shaft is not suitable. 2. The spring of the handle in the back cover falls off.

4.2.6 Put in the valid fingerprint, but the elevator does not work. Reasons include:

A. the wires are not connecting correctly.

B. Something wrong with the elevator.

4.2.7 The elevator gears normally while the front handle idles. Reasons includes:

A. The handle is not back to the origin palace.

B. 1. Length of the handle square shaft is not suitable. 2. The spring of the handle in the back cover falls off.

4.2.8 No response after the batteries installed. Reasons include:

-
- A. Wires between the front and back lock cover are not connected probably.
 - B. the wires are broken when installed.

5 After-sale service

5.1 Free installation policy

5.1.1 Every customer of our company has the right of one-time free on-spot service. And the operator must be nominated by our company.

5.1.2 Charging items:

- (1) after the period of “ three-guarantees”;
- (2) opening pores on door of special materials;
- (3) removing the locks or re-install;
- (4) other items that are not applicable for free installation policy

5.2 Free Maintenance and upkeep

5.2.1 “Three-year free maintenance and upkeep ” service is available for every customer who buy Highest products. Warranty date starts from the buyer’s receiving lock.

5.2.2 Cases as below are not covered by the warranty and upkeep would be charged.

- (1) Products are beyond the maintenance deadline or purchased through irregular way.
- (2) Damages caused by improper operation, dissembling the cover, man-made sabotage or other force majeure.
- (3) Locks repaired in unassigned maintenance stations.
- (4) No warranty card, or didn’t handle the warranty procedures;
- (5) the lock model number does not matched with the warranty card.

5.2.3 warranty registration procedures:

(1) the warranty card is the necessary certification in warranty period, please safekeeping;

(2) Life-long maintenance. Maintenance after one year will be charged

5.3 Product return policy

Implement following *regulation of replacement and amendment of partial products liability* issued by China's relevant ministries.

5.4 Service guiding

5.4.1 Remarks:

(1) Please check if the warranty card is complete, if not, contact the sale department to reissue.

(2) Every customer of our company has the right of our “three-guarantee” service. If the service departments(service network for short, the same below) are not nominated by our company, we provide the service for charging fee.

5.4.2 Operation guiding:

(1) You can contact the distributor to appoint the time of home service;

(2) Please check if your product mode is matched with the installation personnel's;

(3) Please confirm if he is our nominated installation personnel when you enjoy the home service;

(4) After lock installation, there should be a demonstration at least for 10 minutes to check the installation result.

5.4.3 Warranty guiding:

(1) If your electronic lock is out of working, please contact relative distributor, appointing maintenance time;

(2) When you are provided the home service, please confirm if he is our nominated installation personnel, and please show you warranty card;

(3) After fingerprint lock maintenance, there should be a demonstration at least for 5 minutes to check the maintenance result and provide your advice. If you are per user, please stamp your official seal.

5.4.4 User complaint approach: You can directly call 400-113-3440 to our after-sale service center.

6 Warranty card

User name	
Tel	
Installation address	
Installer	

Product model No.		
<input type="checkbox"/> Single-bolt lock body	<input type="checkbox"/> Hotel lock mortise	
Purchasing date		
Installing date		

Supplier	
Tel	
Address	
Signature/ seal of supplier	

Maintenance data sheet

Serial NO.	Maintenance date	Instrument failure	Solutions	Maintenance unit	Maintenance man
1					
2					
3					
4					

Certificate

user name: _____

product mode: _____

date of manufacture: _____

inspector: _____

(The certificate is invalid without seal.)

Packing list

Serial NO.	Items	quantity
01	Front lock case	1 set
02	Back lock case	1 set
03	Lock cylinder	1 set
04	Door buckle	1 piece
05	lock holder case	1 piece
06	Cross recessed raised countersunk head screws (adaptation)	4 pieces
07	Square shaft: 8x8xL(adaptation)	1 piece
08	Lock-in knot:5x5Xl(adaptation)	1 piece
09	2 pieces of mechanical keys	1 set
10	User manual of fingerprint lock	1 set
11	Mould for opening pores of fingerprint lock	1 piece
12	warranty card	1 piece
13	certification	1 piece